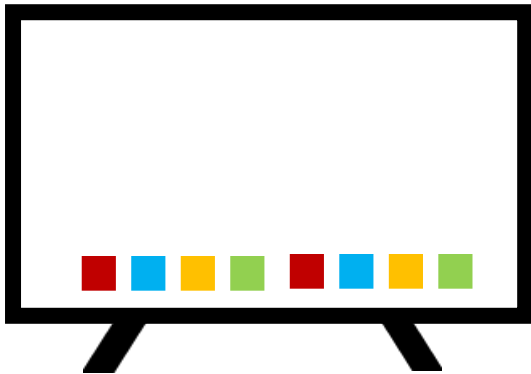


Module One

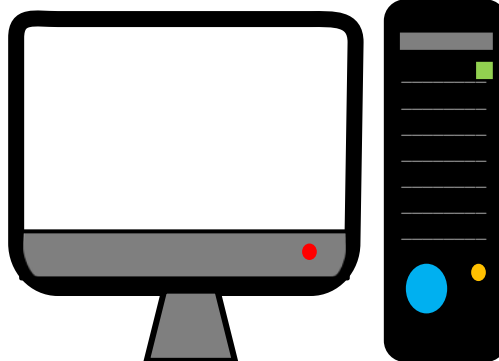
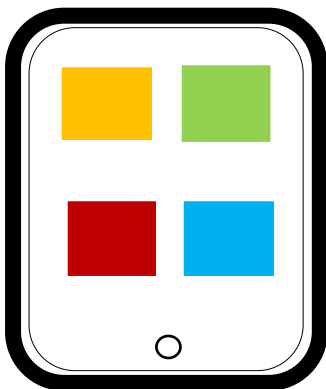
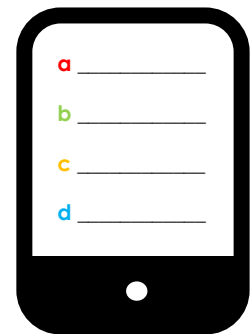
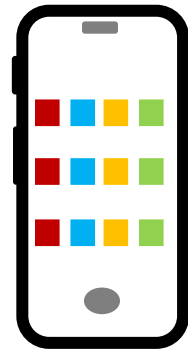
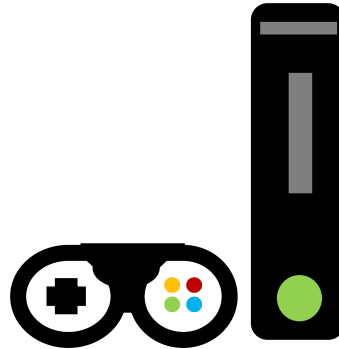
Using devices and handling information

1.1. Know the main features and uses of different types of device.

Task 1 Name the following types of digital devices. An example has been given.

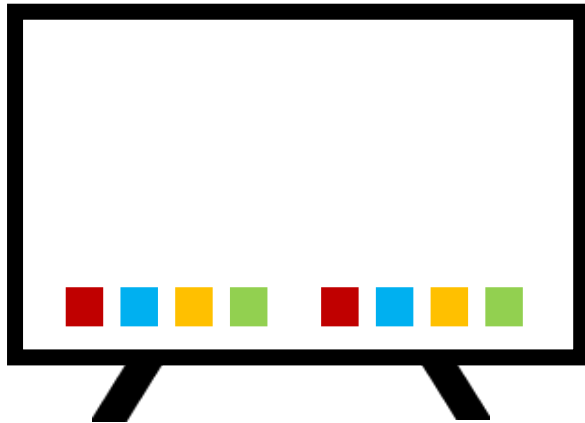


Smart TV



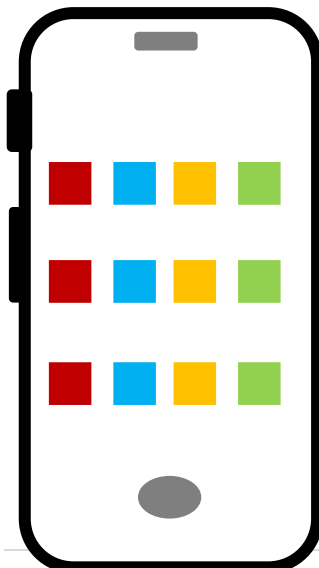
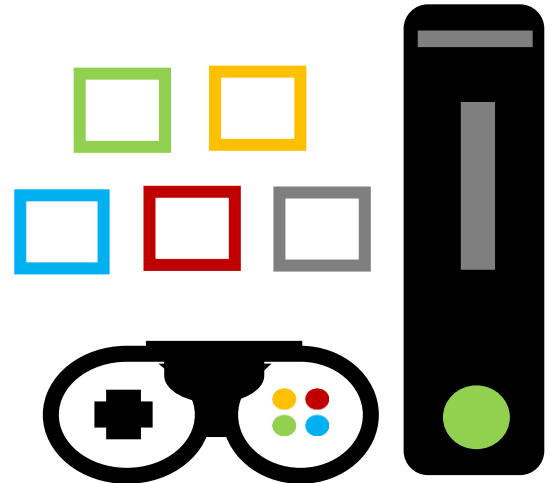
Task 2

Using your existing knowledge coupled with some online research and record below **5** key features for each digital device.



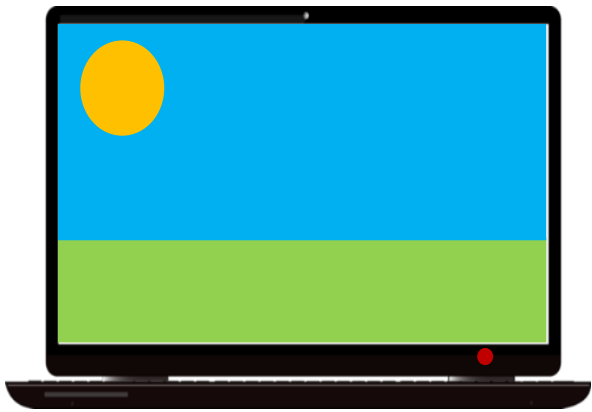
- 1 Access streaming services i.e. Netflix, Disney +
- 2 Watch videos and listen to music on YouTube
- 3 Use an all-in-one remote as well as voice control
- 4 Skype Family and Friends
- 5 Cast straight from your mobile device to your TV

- 1 _____
- 2 _____
- 3 _____
- 4 _____
- 5 _____



- 1 _____
- 2 _____
- 3 _____
- 4 _____
- 5 _____

Task 2 Cont.



1 _____

2 _____

3 _____

4 _____

5 _____

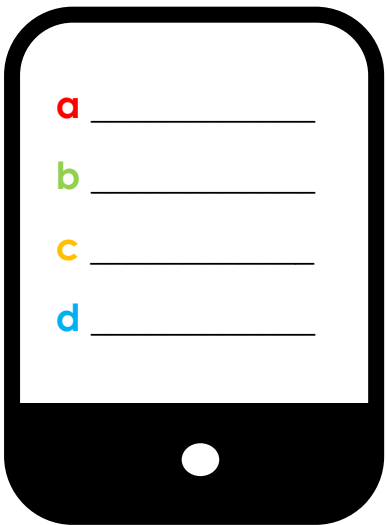
1 _____

2 _____

3 _____

4 _____

5 _____



1 _____

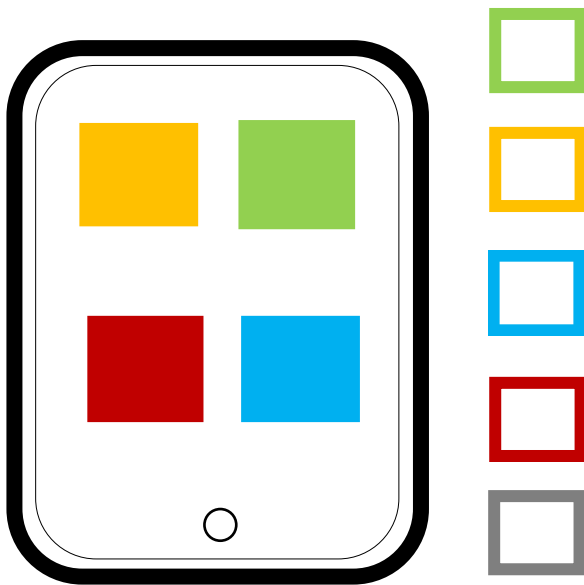
2 _____

3 _____

4 _____

5 _____

Task 2 Cont.



1 _____

2 _____

3 _____

4 _____

5 _____

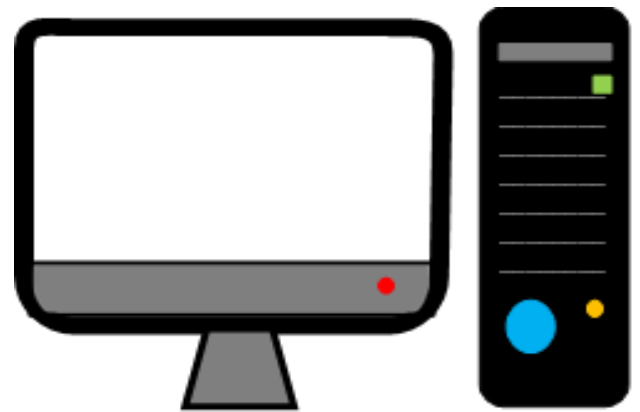
1 _____

2 _____

3 _____

4 _____

5 _____



1 _____

2 _____

3 _____

4 _____

5 _____

Task 3

Go back and tick the coloured box that best matches how much you use each of the 9 digital devices.

You cannot imagine life without this device!








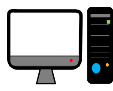

You use this device on a day-to-day basis!

You occasionally use this device!

You have used this device in the past but not so much anymore!

Never used this device!

As a group, share your information with each other and complete the following tally chart using the data gathered.

Example

									
						0			

You will use this collective data in the next task.

Task 4

Answer the following 3 sets of questions.

Questions based on your usage.

Which digital device/s do you use the least?



What are your reasons for your limited use?

(i.e. exceeds your budget, it does not meet your needs, too complicated to use etc.)

Which is your favourite digital device? Explain your choice.

(i.e. It enhances your day-to-day life, enables you to be more productive at work/college/school, improves your street cred! etc.)

Question based on the group's usage. (Tally Chart)

Which digital device was the most popular? Why do you think this is?

Which digital device showed the least usage? What could be the reason for this result?

How many device/s had at least one tick in the 'Never used' box?

Are there any patterns or links with regards to the popularity and the portability size or even the weight of each device?



Bonus questions

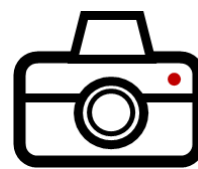
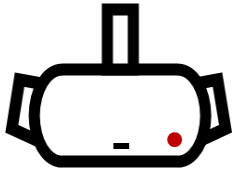
Which 3 of the digital devices are stationary?

1

2

3

Name these 3 additional digital devices that are currently on the market.



Which of all of the devices do you think are still evolving and could be more popular in a year from now? Explain your answer.

Which of all of the devices do you think are on borrowed time and could be obsolete in the near future. Explain your answer.

How do you see the future of digital devices evolving? What's next? What would you like to see on the market?

Group Discussion

How do you feel about the advancement of digital devices and technology as a whole?



- Is it exciting for you to see what's next?
- Are you concerned about how things will evolve?
- Does it frighten you to think what the future may look like?